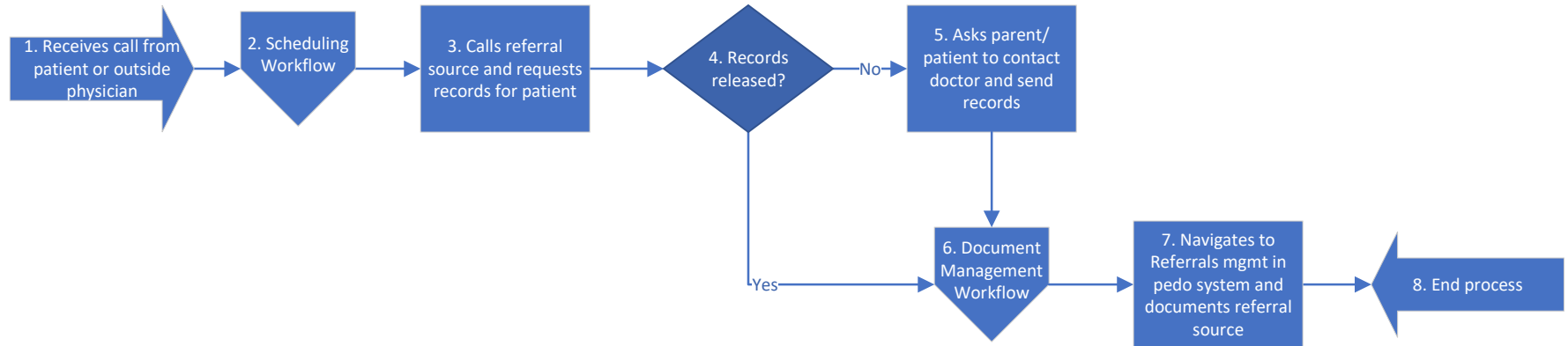


Incoming Referral – Office

Front Office Coordinator



7. Marketing has provided a list of generic entries to load. Doctors (pediatricians, general dentists, etc.) should be entered by name. Recommend this is maintained by one staff member (FOC) with one back up (PM).

7. Per marketing only one doctor entry is required for those who travel between locations.

Additional comments:

1. PM runs report from pedo system to track referral sources for RDO as needed.